

1800 VA
150/300 VAC



Standard Features:

- Universal (100-240V, 1Ø, 50/60Hz.) PFC input with inrush current limiting.
- Single Phase, Dual range; 0-150V/0-300V output
- 15 to 1,200Hz. full power operation
- 5,000 Hz small signal bandwidth
- 10A universal output receptacle
- Adjustable Current Limit
- Adjustable Current Protect
- Keyboard Lockout
- Remote output relay interlock
- Transient/Waveform simulation
- 99 steady-state programs with associated transients for static and dynamic test applications
- True-RMS metering of volts, amps, and power
- Certifications:
 - CSA C22.2 No. 61010-1
 - UL 61010-1
 - EN 61010-1
 - EN 61326-1
- UPC Manager Software Suite

Available options:

- GPIB (IEEE-488.2) Interface
- Programmable Output Impedance
- Harmonic Analysis (FFT) and Waveform Synthesis
- Country specific input power cable

Included with standard delivery:

- AC Power Source
- Certificate of Compliance
- Rack Mount Kit
- Operators Manual
- UPC Studio Software

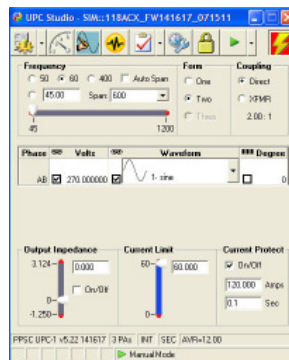
Pacific Power Source's model 118ACX-UPC1 provides the universal connectivity, high power density, and on demand technical ability required for all your low power, single phase, AC Power Source applications. Convenient to operate from the front panel keypad or remote interface, the 118ACX-UPC1 is ideal for AC Power simulation, frequency conversion, laboratory, and bench-top power applications.

Worldwide input voltages and power frequencies are accommodated by the wide range, power factor corrected, input power supply. Inrush current limiting permits operation in laboratories with soft or limited input service. Compliance to CE, CSA, and UL test standards adds confidence to the design and allows the product to be shipped anywhere in the world.

Whether you are performing simple bench tests from the front panel keypad, or using Pacific's UPC Manager via the remote interface, the 118ACX offers the "expertise" required for all of your low power AC test applications.

Master the Power of the Wave

Paired with Pacific's UPC Manager, the UPC-1 Programmable Controller installed in the 118ACX becomes a powerful AC Power Simulator/Transient Generator addressing all of your low power test applications.

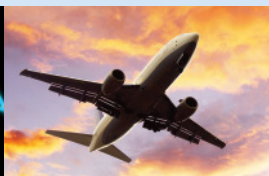


UPC Manager Software Suite

UPC Manager Software gives you the tools necessary to quickly and easily operate your AC Power Source. With our complete, graphical, interface control all areas of your AC Power Source testing with simple presets, user prompts, test sequences, test plans and custom reports.



THE POWER OF EXPERTISE



FREQUENCY CONVERSION

AEROSPACE

R & D

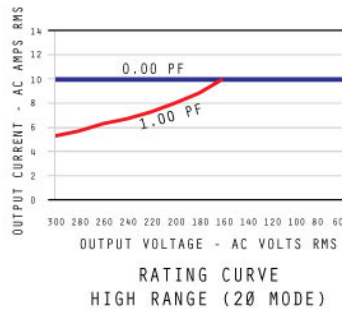
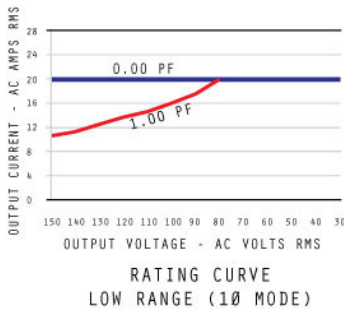
MILITARY

MANUFACTURING

CUSTOM

AC Output Specifications

VOLTAGE	Range 0-150/0-300 Vac Resolution 0.1 Vac steps Accuracy ±0.05% of command voltage referenced to the internal voltmeter with CSC engaged.												
OUTPUT CURRENT (see rating curves)	<table border="1"> <tr> <td></td> <td>Rated</td> <td>Max</td> <td>Peak</td> </tr> <tr> <td>Low Range</td> <td>20 A_{RMS}</td> <td>30 A_{RMS}</td> <td>40 A_{PK}</td> </tr> <tr> <td>High Range</td> <td>10 A_{RMS}</td> <td>15 A_{RMS}</td> <td>20 A_{PK}</td> </tr> </table>		Rated	Max	Peak	Low Range	20 A _{RMS}	30 A _{RMS}	40 A _{PK}	High Range	10 A _{RMS}	15 A _{RMS}	20 A _{PK}
	Rated	Max	Peak										
Low Range	20 A _{RMS}	30 A _{RMS}	40 A _{PK}										
High Range	10 A _{RMS}	15 A _{RMS}	20 A _{PK}										
OUTPUT FREQUENCY	Range 15 to 1,200 Hz Resolution 4 significant digits												
OUTPUT POWER	1800VA/1600W												
LOAD REGULATION	15 to 200 Hz., 1% 200 to 800 Hz., 2% 800 to 1,200 Hz., 3%												
OUTPUT DISTORTION	15 to 200 Hz., < 0.25% 200 to 800 Hz., < 0.50% 800 to 1,200 Hz., < 1.00%												
RESPONSE TIME	80 µSec. typical, 10–90% load step.												



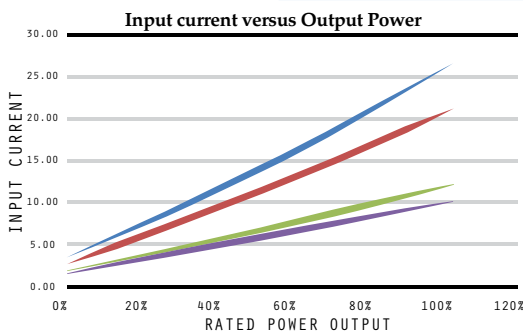
Rated continuous load current as a function of Power Factor and Output Voltage - Nominal Input Line. Short term 160% overloads are permitted. Operating time before thermal shutdown will vary from seconds to several minutes depending upon line and temperature conditions.

Measurements

VOLTAGE (True RMS)	Range 0-354 VLN, 708 VLL Accuracy ±0.2% of range +cal.ref.
CURRENT (True RMS)	Range 50 A _{PK} Accuracy ±0.2% of range +cal.ref.
POWER	Measures True Power, Apparent Power and calculates Power Factor. Range 10,680 W Resolution 1.0 Watts or VA
POWER/CREST FACTOR	Calculated and displayed to three significant digits.

AC Input Power

INPUT VOLTAGE	1 Phase, 100–240 VAC ± 10%
INPUT CURRENT (see chart)	Full Rated Load: 22 A _{RMS} at 120V, 11 A _{RMS} at 240V
INPUT FREQUENCY	47–63 Hz
INPUT P_f	>0.98



The 118ACX is provided with a 30A, single phase Input circuit breaker. Input current demand will vary with input voltage and percent load. Care must be taken to ensure that output load on the power source does not cause it to demand more input current than that provided by local mains.

General/Environmental

OPERATING TEMP.	Full Power 0-40°C; Reduced Power 40°-55°C
RELATIVE HUMIDITY	0-95% (non condensing)
CURRENT LIMIT	Range 0 to 50 A _{PK} Resolution 0.025 I _{PK} Accuracy ±3% of full scale
CURRENT PROTECT	Range 0.1-124.0 A _{RMS} Delay 0.1 to 655.35 Sec.
WAVEFORM LIBRARY	22 executable waveforms in Non-Volatile RAM.

External Inputs/Outputs

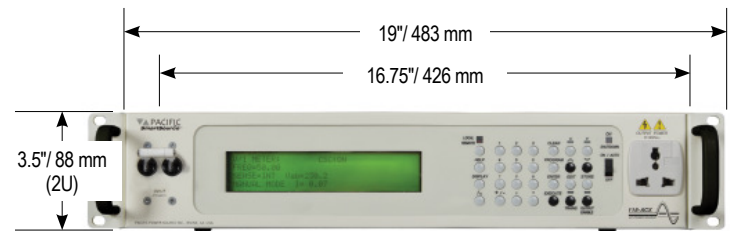
AUX INPUTS	External AC input algebraically summed with UPC waveform and amplified 35x to the direct coupled output.
AM INPUTS	±10% VDC input for each phase modulates the output voltage ±100%.
SYNC OUTPUTS	TTL signals are provided to synchronize external test equipment to the power source output. <ol style="list-style-type: none"> 1. TTL pulse at Zero Crossing, Phase A 2. Transient Pedestal – TTL signal, True for duration of Transient Event. 3. DRM – TTL Clock – multiple of output frequency.

Interface/Software/Options

RS232 (standard)	SCPI Commands, Baudrate up to 38.4 kbps
/G	GPIB Interface, IEEE488.2 (replaces RS232)
/Z	Programmable Output Impedance Option
/HAS	Harmonics, Analysis and Synthesis Option
/IM	Inrush Meter Option
UPC-Test Manager	License for Software UPC Test Manager

Mechanical

DIMENSIONS	3.5"/88 mm x 16.75"/426 mm x 23.62"/600 mm (excluding rack kit and TB cover)
WEIGHT	40 lbs / 18.2 kg
COOLING	Side intake with rear exhaust.
INPUT CONNECTION	Compression terminals with strain relief. Optional power cables available.



The 118-ACX is designed for bench top or 19" equipment rack operation. Shown with provided rack mount handles.

Nemko **CE** **CCC**

PACIFIC
POWER SOURCE

17692 Fitch, Irvine, CA 92614 USA
Phone: +1 949.251.1800
Fax: +1 949.756.0756
Toll Free: 800.854.2433
E-mail: sales@pacificpower.com
www.pacificpower.com