

PROTECTION SUITE



Protection Testing Software

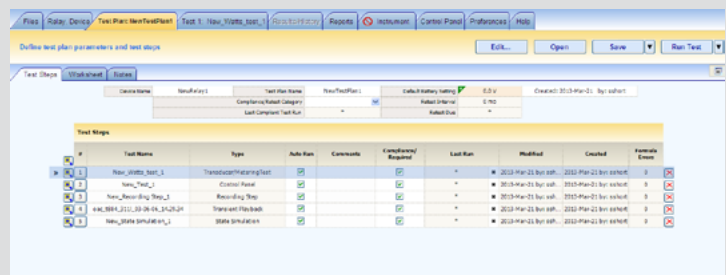
Designed for protection testing, data management and compliance reporting

Doble's Protection Suite Software provides you with complete protection testing capabilities. Run manual, automated and IEC 61850 compliant tests for protection scheme verification. Protection Suite gives you the flexibility to create and perform unique tests. It also features a complete data management system for storage, trending, system planning analysis and reporting to regulatory agencies.

Protection Suite Basic

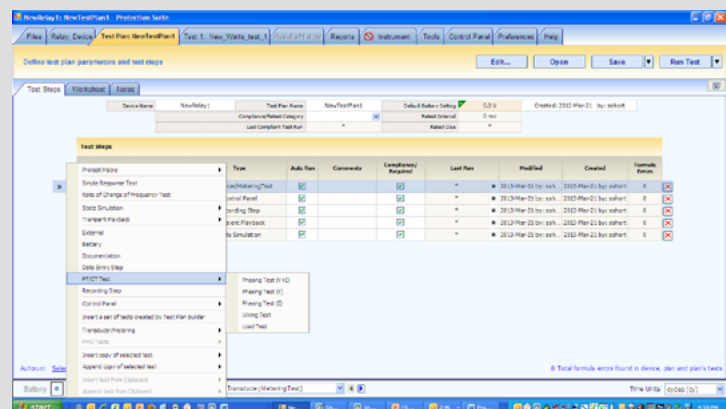
Protection Suite Basic is used to manually operate your F-Series equipment. Run ramp and step functions (voltage, current and frequency) for testing operation of a protective device. A state simulation application is used for testing schemes (fault types and reclosing operations).

It also includes TransWin playback functionality for applying transient playback capability, metering and transducer testing options, Analog Input Measurement recording capabilities, as well as test file and report generating features.



Protection Suite Pro

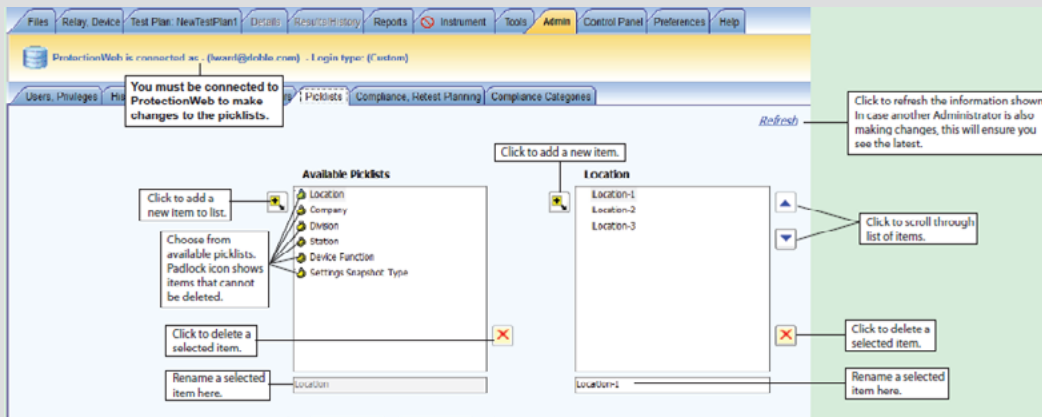
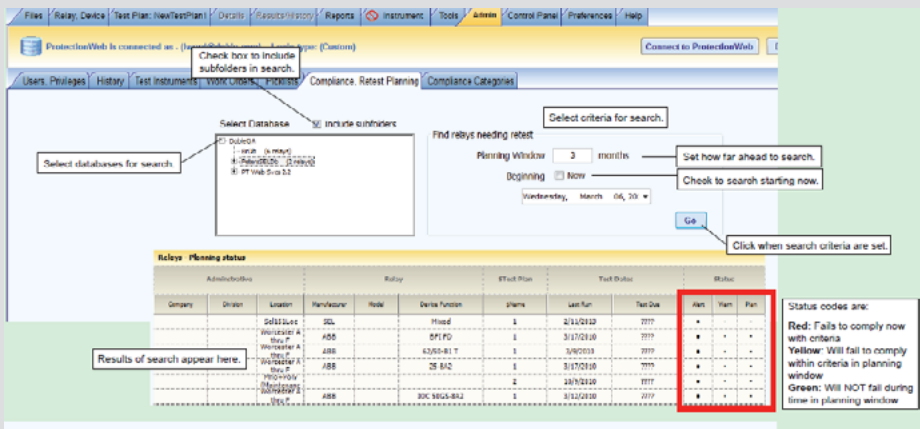
Protection Suite Pro is a field testing platform that gives you complete control over your protection testing programs. Capable of testing old and state-of-the-art protection devices, Protection Suite Pro can also convert your existing ProTest relay test plans into individual files for easy access and manageability. The built in PRC-005-2 features lets you filter data for compliance reporting and each user can link to Protection Web Services to synchronize test data and test plans.



Protection Web Services

Protection Web Services is your data management system to store, analyze, manage, control and report on your protection testing program. This system is designed to help you meet internal and regulatory requirements including PRC-005 2 data (relay calibration data, functional data, PT & CT verification data, battery test data, and communication test data).

Protection Web Services consists of three components:



Protection Suite Admin – a software tool to control, access and organize data stored on your server. It provides a single location for collecting and reporting data for regulatory requirements. Your program administrator assigns access levels to specific relay files and information while maintaining history logs for reporting the status of a work orders and assigned tasks.

Protection Web Services Software – Provides all the essential software elements needed to process incoming and outgoing Protection Suite and ProTEST data.

Protection Web Client – Transfers your ProTEST data from the field to the server. This piece is necessary if you would like to use Protection Web Services, but still use ProTEST software.

